



Maximum Performance



UMB360, UMB500, UMB700

FEATURES AND BENEFITS

- Freestanding, high spin
- Oversized frame, bearings and drum
- Large drain valve 2x Ø 76 mm
- Easy access to all parts
- Frequency controlled motor
- Large door opening for easy loading and unloading
- Perforated lifting ribs: better washing results, lower water consumption
- Ecological washing programmes – significantly reduces water and electricity consumption
- Soap dispenser with 5 removable compartments
- RS485 & USB plug
- Designed with focus on ergonomics
- Patented inner door lock mechanism

OPTIONS

- Liquid soap pumps
- Isolation for energy, heat and noise reduction
- Version without soap hopper
- Drain valve for water recycling
- Water sample tap

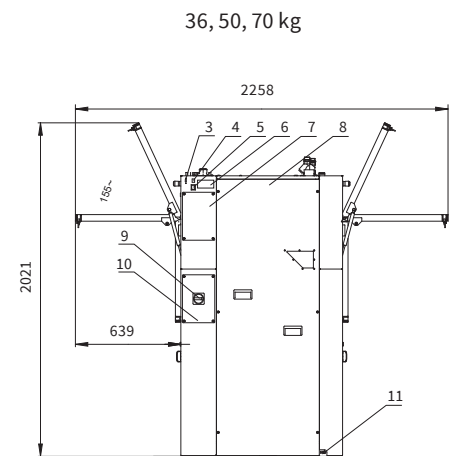
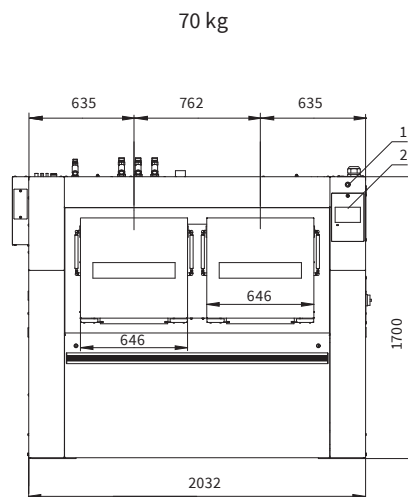
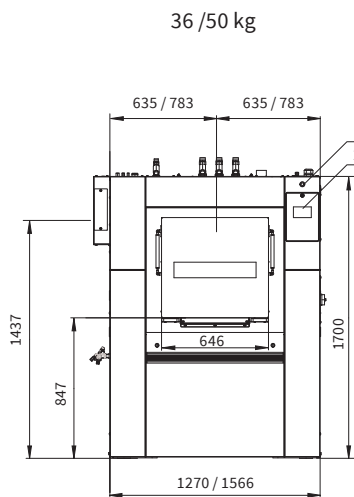
- Extra signalization of end of cycle (light + signal)
- Second display (located on the clean side)
- Lateral drain
- Air operated water inlets
- Automatic weighing system through 4 weighing cells
- Tilting system : assists operators during loading & unloading

CONTROL

- UniLinc Touch
 - 7" full color touch screen display with swipe function: very intuitive for users
 - user-friendly screen with operating instructions built in as part of the control
 - Complete control content available in 34 languages
 - 20 standard wash programmes, total memory capacity for 99 programmes
 - Automated service reminders remind users to maintenance tasks
 - Water leak detection
 - Slow drain detection
 - Temperature-time verification

BARRIER WASHER-EXTRACTORS

TYPE		UMB360	UMB500	UMB700
INNERDRUM				
Capacity 1:09	kg (lb)	40 (88)	55,5 (122)	78 (172)
Volume	litres	360	500	700
Diameter	mm	775	775	775
Depth	mm	764	1060	2 x 742
DRUM SPEED				
Wash	rpm	41	41	41
Extraction	rpm	900	900	900
G-FACTOR				
HEATING				
Electricity	kW	36	48	60
Steam	bar	1 - 8	1 - 8	1 - 8
Hot water	°C	90	90	90
Sound pressure level	dB (A)	< 68	< 69,9	< 69
Water valves connection	BSP	3x 1"	3x 1"	3x 1"
Water pressure	kPa	100-600	100-600	100-600
Rec. water pressure	kPa	300-500	300-500	300-500
Water inlet	l/min	20	20	20
Drain valve	outer Ø mm	76	76	76
Flow amount with drain valve	l/min	2 x 210	2 x 210	2 x 210
Steam valve connection	BSP	3/4"	3/4"	3/4"
Steam pressure	kPa	100-800	100-800	100-800
DIMENSIONS				
Size H*W*D	mm	1700 x 1270 x 980	1700 x 1566 x 980	1700 x 2032 x 980
Net weight	kg	960	1130	1310
TRANSPORT DATA				
Packed H*W*D	mm	2005x1530x1255	2005x1830x1255	2005x2290x1255
Gross weight	kg	1090	1280	1470



1. Emergency stop
2. Control panel
3. USB Port
4. PC Programming Connection

5. Switch: Steam / Electric Heating
6. Serial Plate
7. Electrical Signals Liquid Soap Cover
8. Electrical Components with Frequency

9. Inverter Cover
10. Main Switch Cover
11. Main Switch
12. Equipotential Bounding Terminal

CONSULT YOUR SALES REPRESENTATIVE FOR AVAILABILITY

For the most accurate information, the installation guide should be used for all design and construction purposes. Due to continuous product improvements, design and specifications are subject to change without notice. www.unimac.com

UniMac by Alliance Laundry Systems