



Maximum Performance



UY350, UY450, UY600

FEATURES

- Freestanding, high spin
- Stainless steel cabinet, drum and tub
- Large door opening (Ø54 cm) for easy loading and unloading
- Large drain valves (2 x Ø 76 mm)
- Frequency controlled motor
- Heating: boiler fed + prep for steam
- Perforated lifting ribs: more mechanical action, lower water consumption
- Eco washing programs - significantly reduces water and electricity consumption
- Liquid soap print (8 signals), 13 soap inlets
- EUBedded soap hopper with 5 removable compartments
- Ergonomic height of door enables easy access with trolleys
- User friendly control position regardless user's height
- USB plug on control board
- RS485 plug on the rear panel
- Bumper (front side protection)
- Manual weighing system

OPTIONS

- Liquid soap pumps
- Recycle drain valve

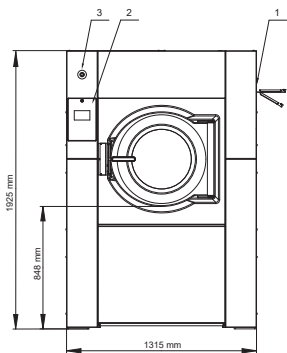
- Insulation for energy, heat and noise reduction
- Extra signalization (orange light + sound)
- Steam/electric heating version
- Air operated water inlets
- Water tap
- 3rd water inlet, high inlets capacity
- Automatic weighing system through 4 weighing cells
- Tilting system: assists operators during loading & unloading

CONTROL

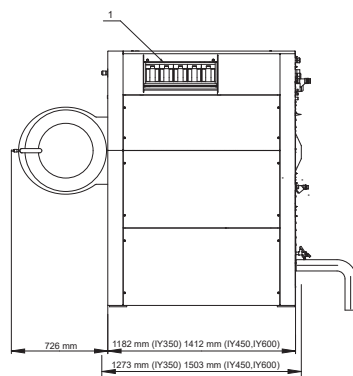
- UniLinc Touch
 - 7" full color touch screen display with swipe function: very intuitive for users
 - user-friendly screen with operating instructions built in as part of the control
 - Complete control content available in 34 languages
 - 20 standard wash programmes, total memory capacity for 99 programmes
 - Automated service reminders remind users to maintenance tasks
 - Water leak detection
 - Slow drain detection
 - Temperature-time verification

SOFTMOUNT WASHER-EXTRACTORS

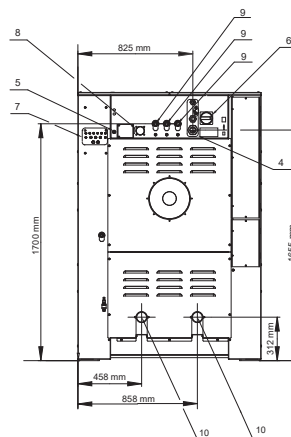
TYPE		UY350	UY450	UY600
INNERDRUM				
Capacity 1:09	kg (lb)	39 (86)	50 (110)	67 (148)
Volume	litres	351	452	601
Diameter	mm	914	914	1035
DRUM SPEED				
Wash	rpm	38	38	36
Extraction	rpm	839	839	788
G-FACTOR				
360				
HEATING				
Electricity	kW	24	36	54
Steam	bar	3-8	3-8	3-8
Hot water	°C	90	90	90
Sound pressure level	dB (A)	<75	<75	<75
Water valves connection	BSP	1"	1"	1"
Water pressure	kPa	100-800	100-800	100-800
Rec. water pressure	kPa	300-500	300-500	300-500
Water inlet	l/min	518	518	518
Drain valve	outer Ø mm	2x76	2x76	2x76
Flow amount with drain valve	l/min	2x 210	2x 210	2x 210
Steam valve connection	BSP	3/4"	3/4"	3/4"
Steam pressure	kPa	300-800	300-800	300-800
DIMENSIONS				
Size H×W×D	mm	1925x1315x1270	1925x1315x1502	1925x1315x1502
Net weight	kg	1010	1350	1500
TRANSPORT DATA				
Packed H×W×D	mm	2125x1425x1470	2125x1425x1700	2125x1425x1700
Gross weight	kg	1170	1490	1640



FRONT SIDE



LEFT SIDE



REAR SIDE

1. Soap hopper
2. Keyboard
3. Emergency stop
4. Electrical connection
5. Electrical connection to liquid soap
6. Main switch
7. Liquid soap pump connections
8. Air vent tub
9. Water connection
10. Drain valve

CONSULT YOUR SALES REPRESENTATIVE FOR AVAILABILITY

For the most accurate information, the installation guide should be used for all design and construction purposes. Due to continuous product improvements, design and specifications are subject to change without notice. www.unimac.com

UniMac by Alliance Laundry Systems